

The Absolute Truth:

Mehta Casts Always Work in N-M Cases



Jim Sanders
University of Rochester

Neuromuscular Scoliosis

- Neuromuscular scoliosis is a broad spectrum
- Is all scoliosis neuromuscular?
- Particular problems include:
 - Spasticity
 - Seizures
 - Poor respiratory function
 - Unable to move from pressure points
 - Poor sensation
 - GI problems

What are the problems with casts?

- Pressure sores
- Lack of chest expansion
- Could be heavy

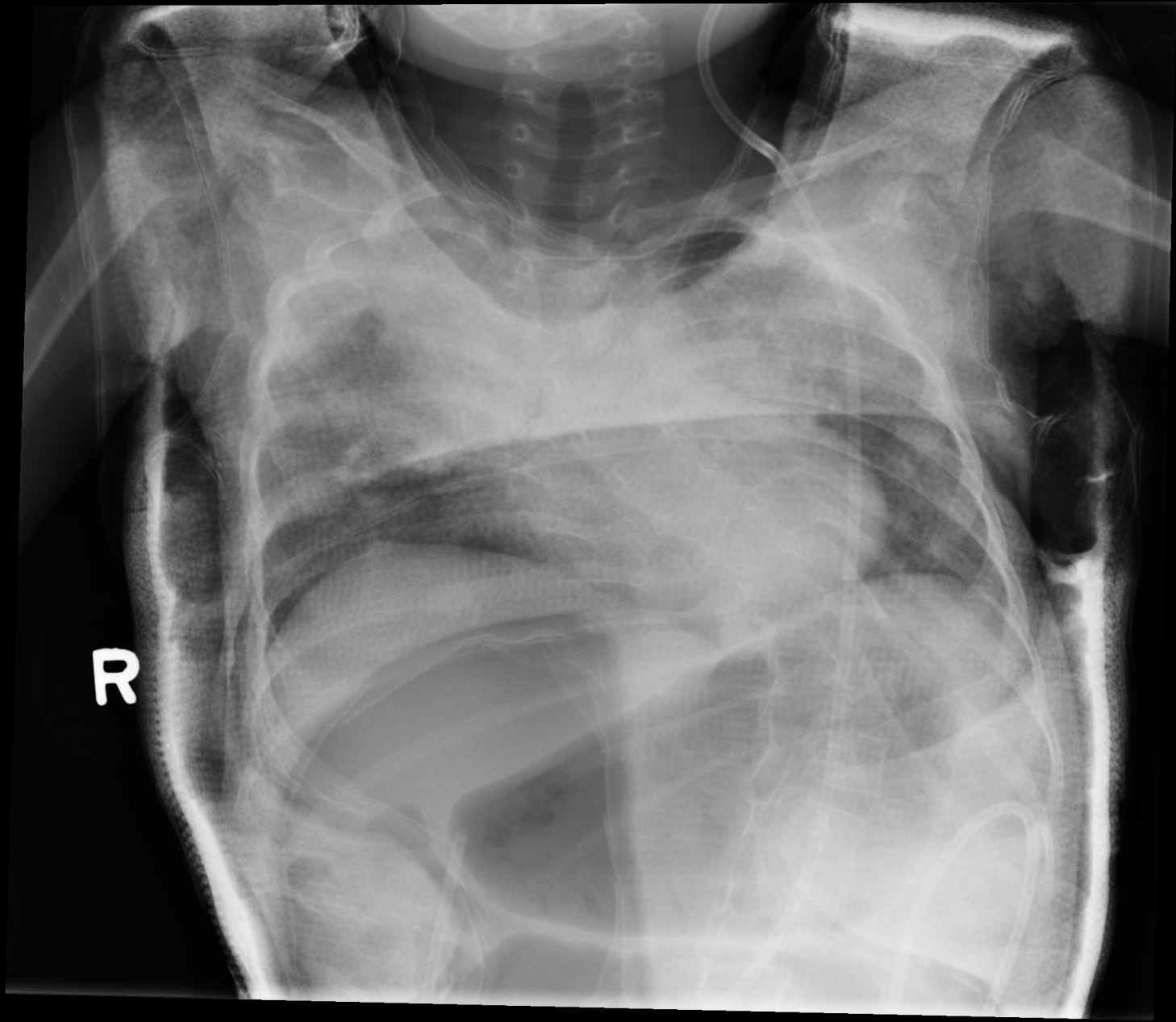


When do I cast NM curves?

- When the parent really wants to try and understands the problems.
- Always with fear and trepidation
- The goal is always surgical delay and not curve correction.

Example:







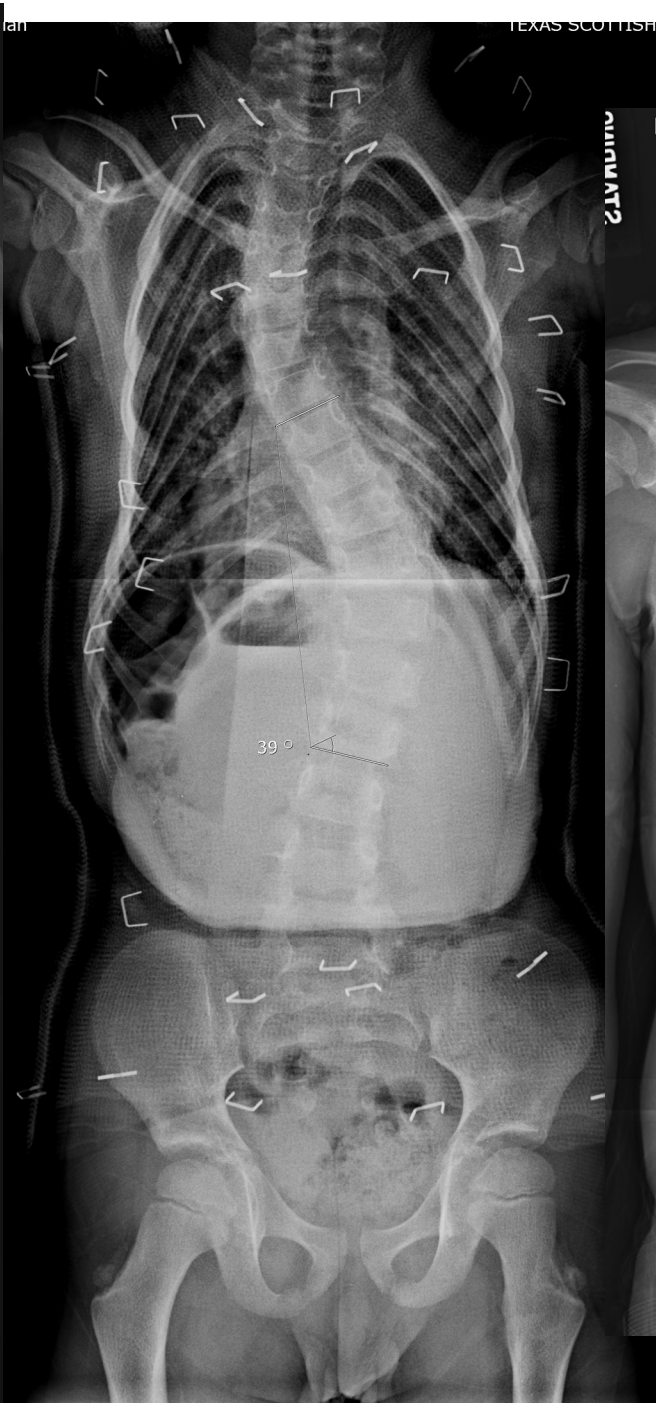
Good?

- One year further with no change in curve
- 2 admissions after casting for pneumonia
- Is this better than a VEPTR or growing rods?



3 yo myopathy / ambulatory





Some Thoughts

- Be cautious if you are attempting to treat NM children with casting.
- You are unlikely to prevent but may delay surgery.
- In any child with potential pulmonary problems, it is a good idea to make two casts on the first treatment:
 - The second as the treating cast
 - The first as a mold for a brace if the patient has to be taken out of the cast for illness

The Absolute Truth:

Mehta Casts Might Help in N-M Cases



Thank you