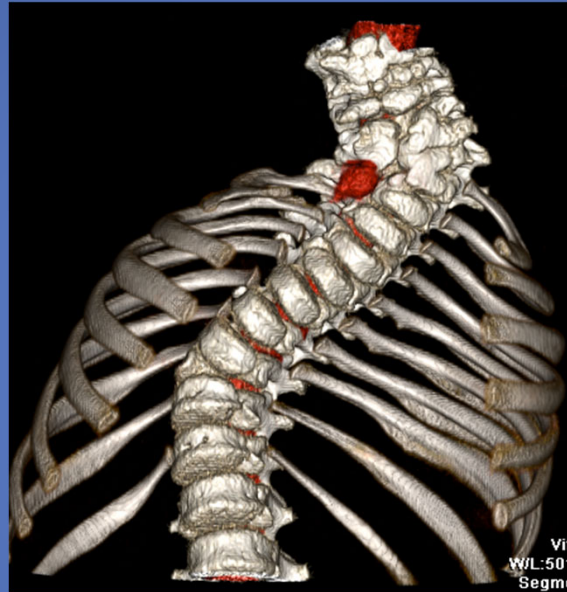
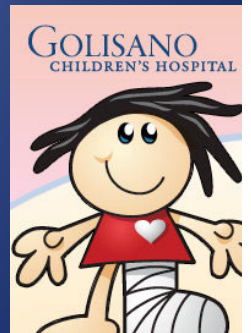


Congenital Thoracic and Cervical Deformity – Case Discussion



Jim Sanders, MD
University of Rochester
Golisano Children's Hospital at the
University of Rochester Medical Center



Birth – neurologically intact except
some right arm weakness



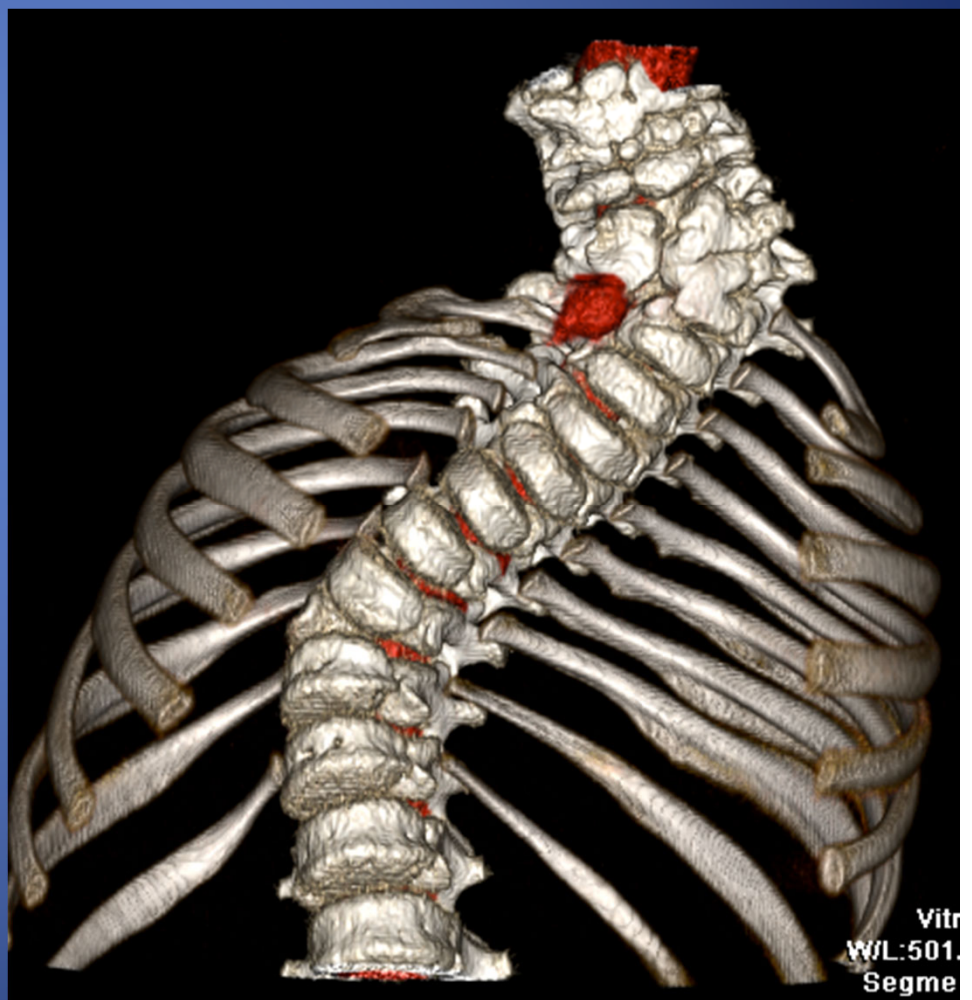
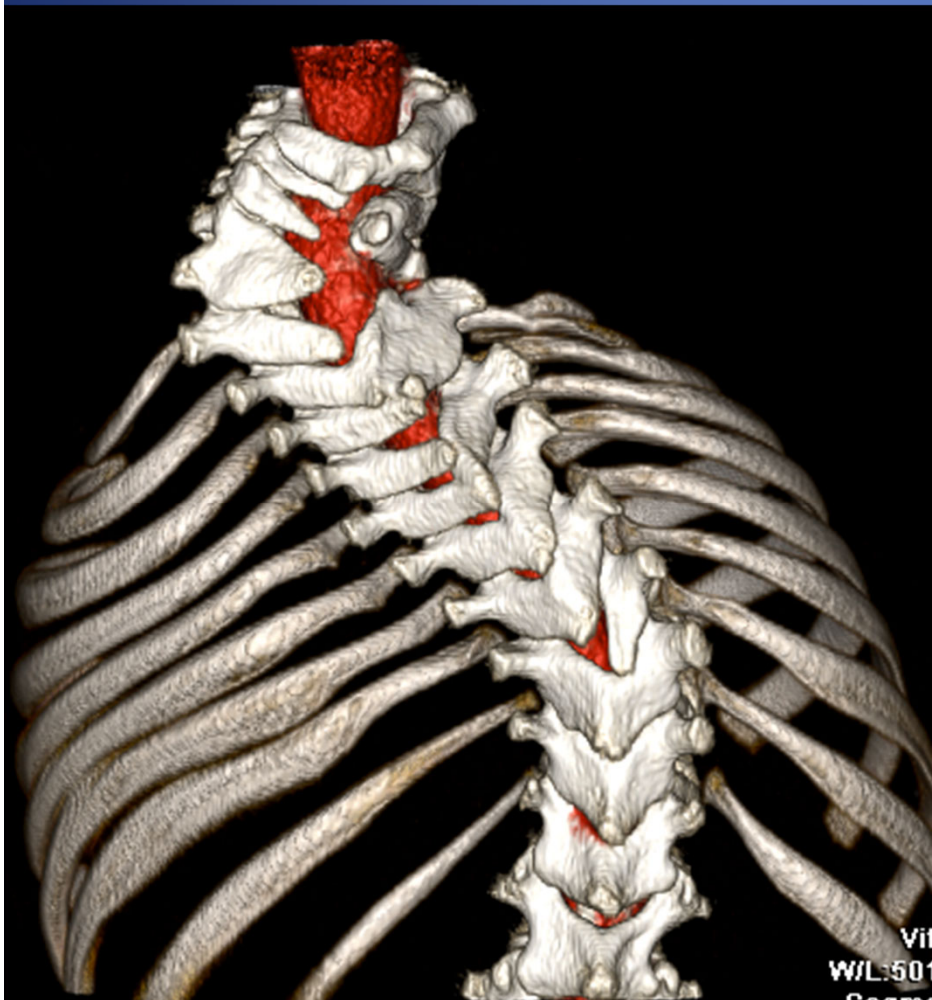
Deformity at 22 months of age

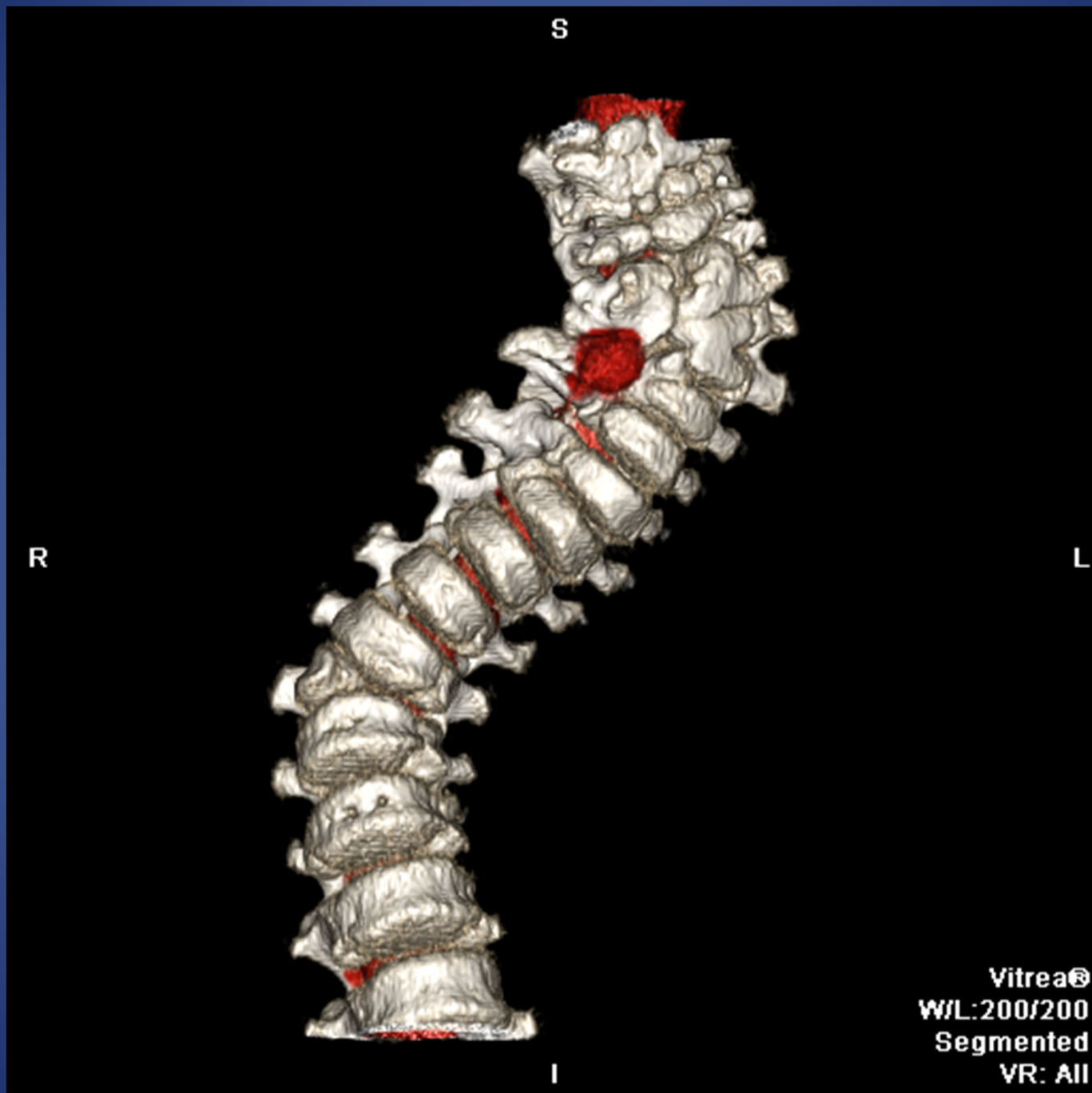


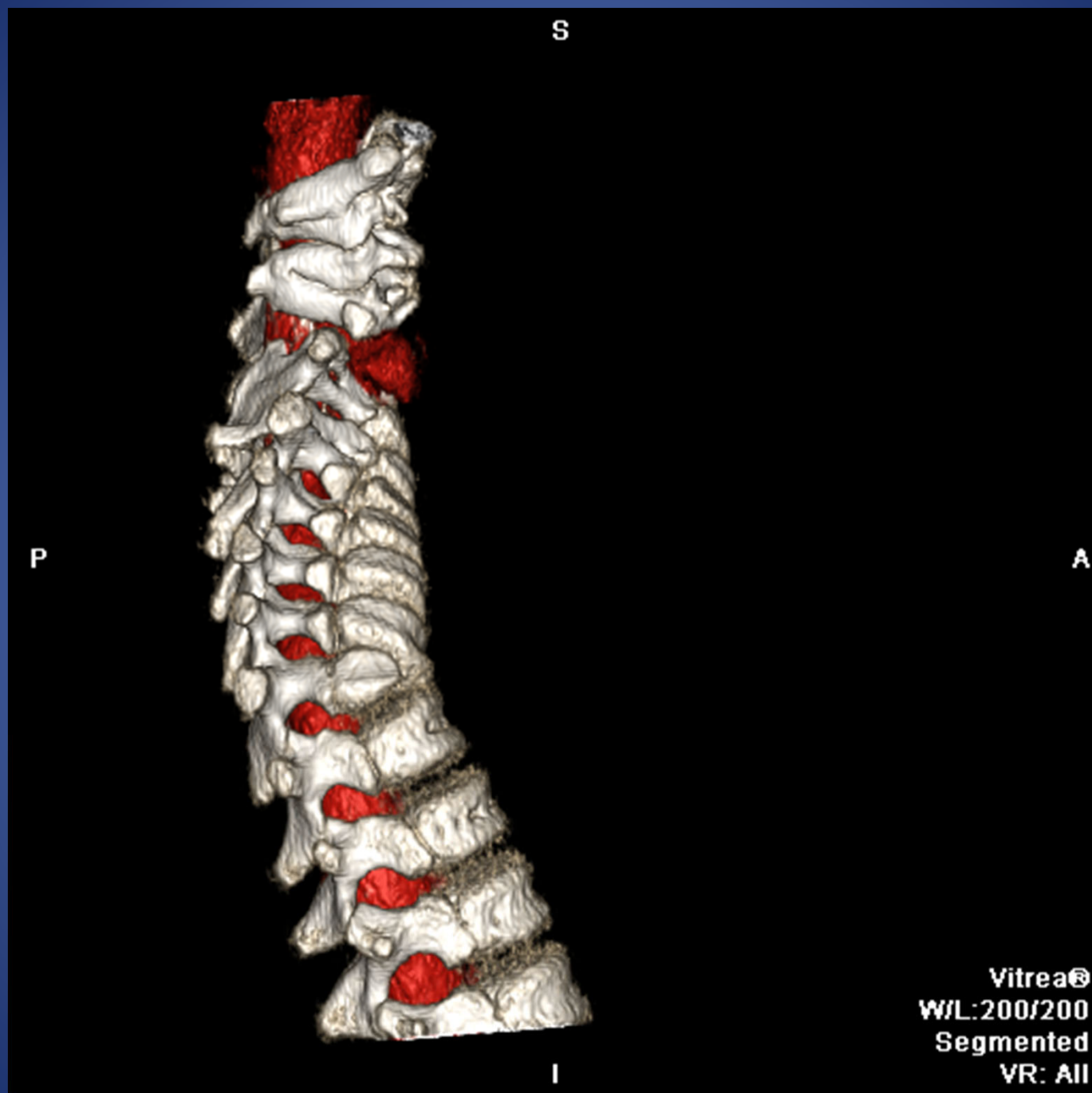
Head Tilt at 22mo



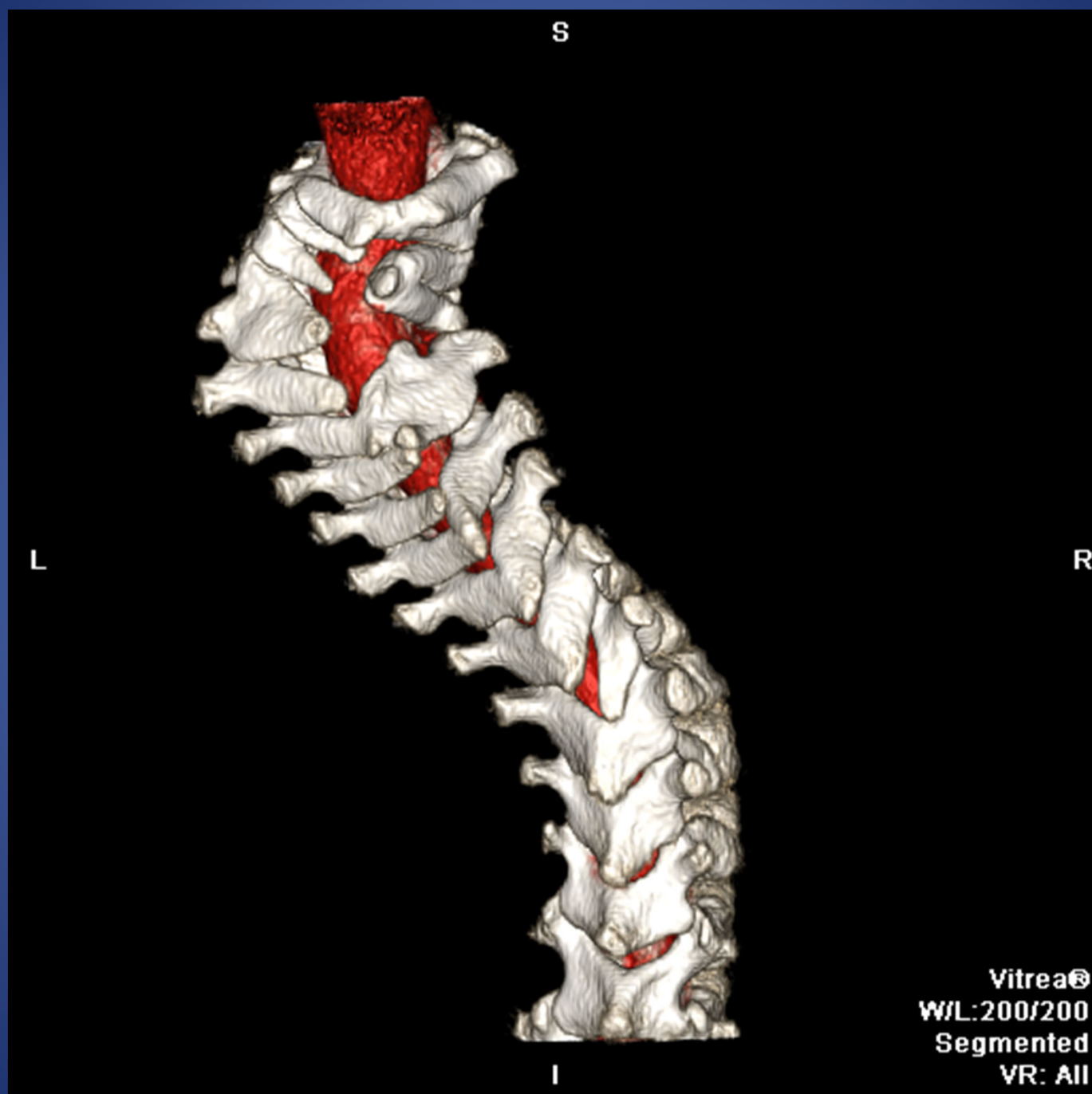
CT Myelogram – small meningocele right cervical region



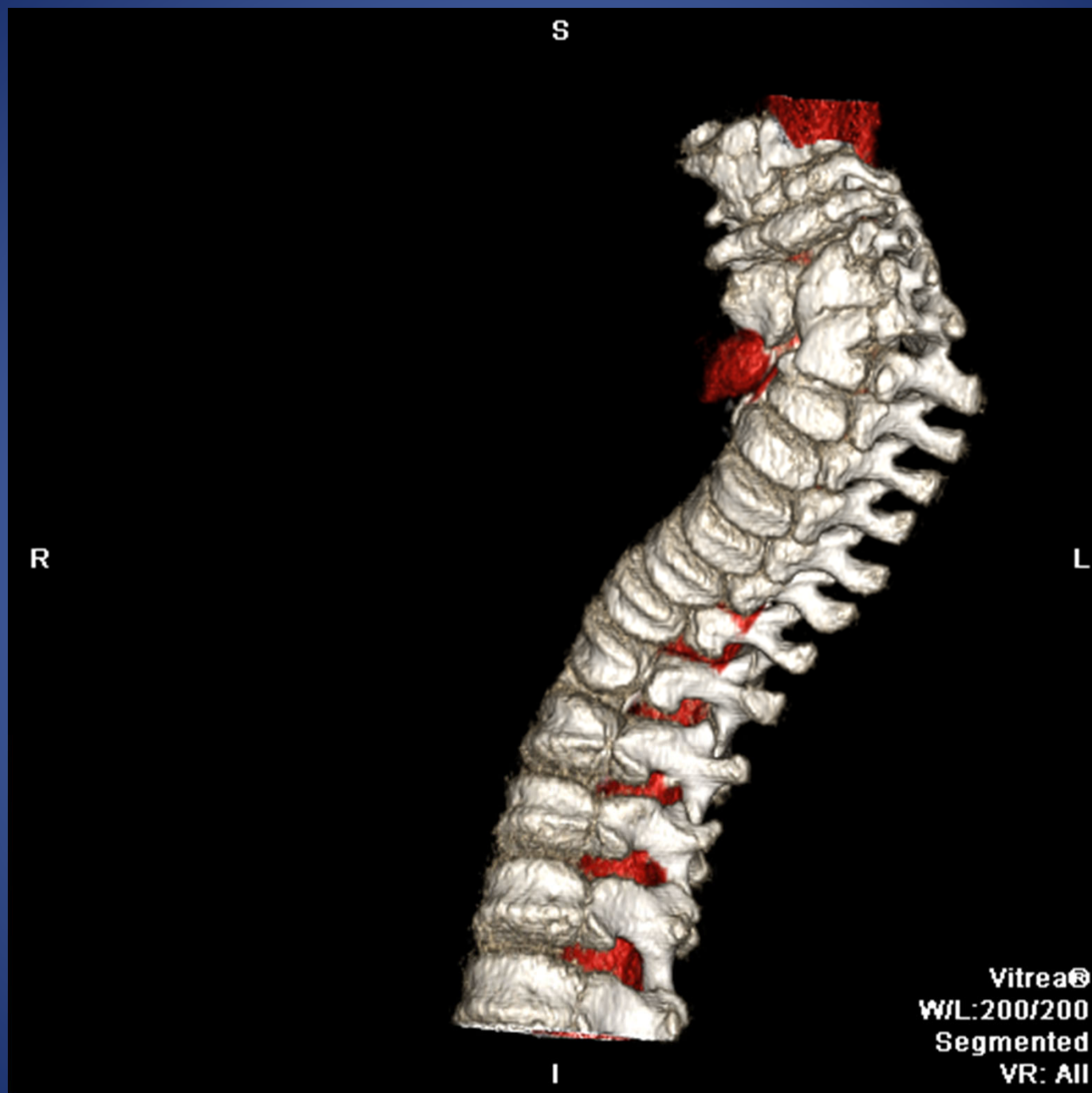


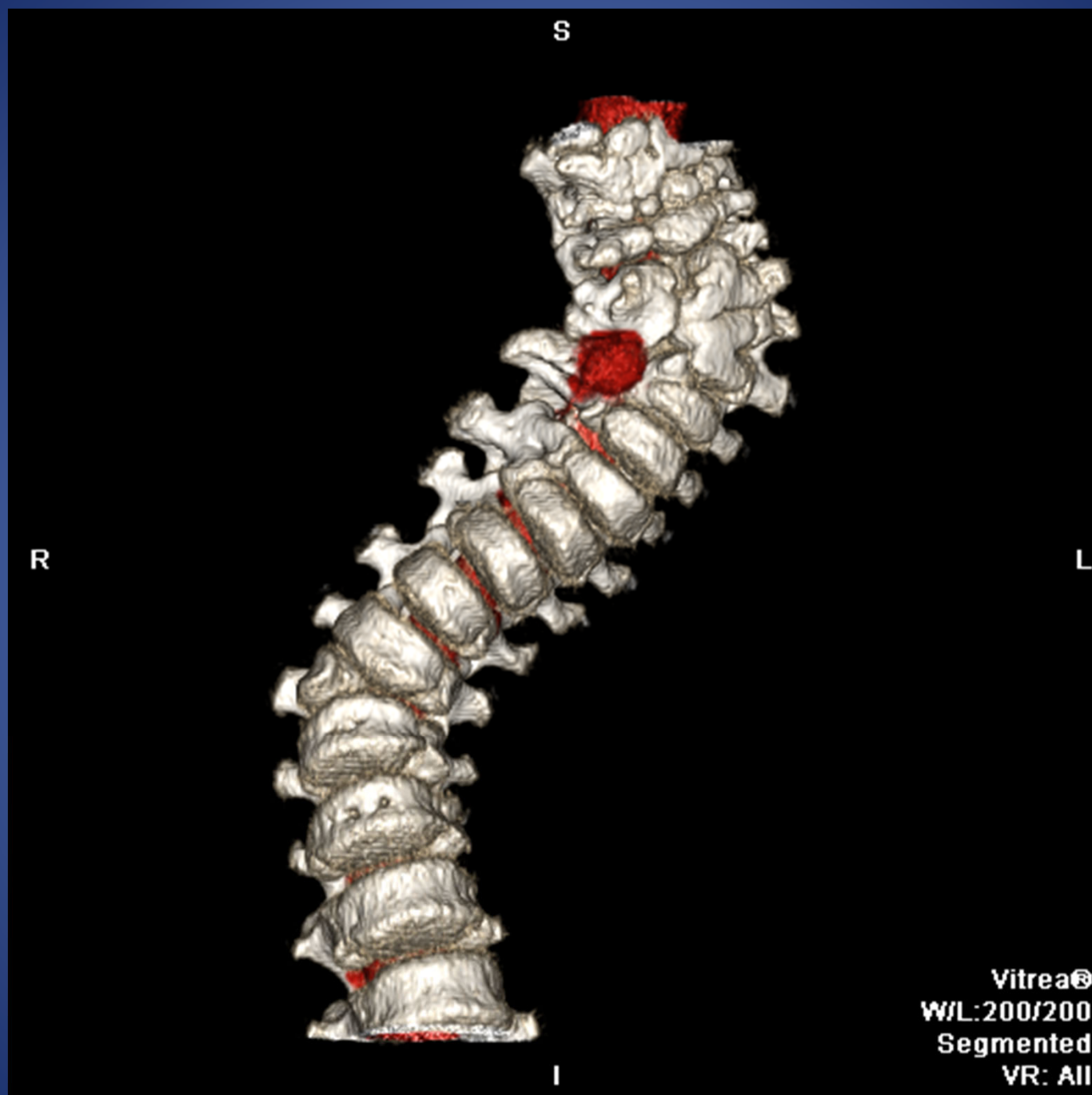


Vitrea®
W/L:200/200
Segmented
VR: All



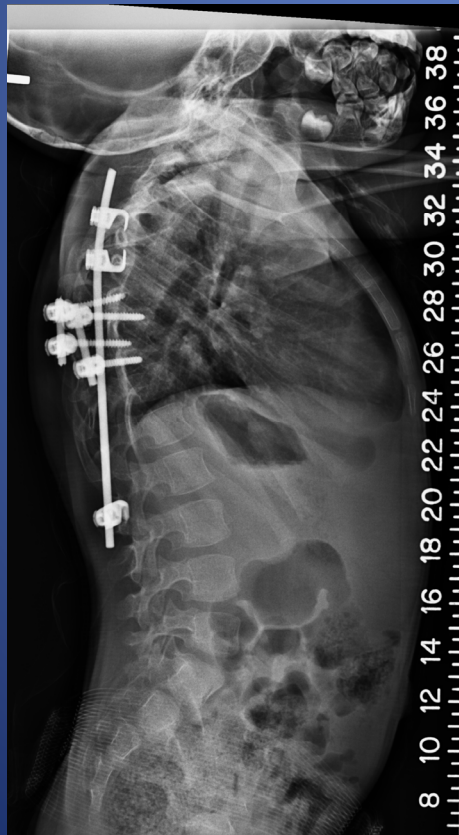
Vitreac®
W/L:200/200
Segmented
VR: All





Surgery

- Underwent midthoracic hemivertebrectomy and spine to rib instrumentation.
- Instrumentation currently being lengthened every ~ 6 months.



What should be done for the residual
cervicothoracic deformity?
Anything different for the thoracic?

