

Does Spinopelvic Alignment Affect Health-related Quality of Life in EOS

Jaime A. Gomez, Ozren Kubat, Jennifer Hurry, Alexandra Soroceanu, Tara Flynn, Mayra Tovar, Regina Hanstein, Virginie Lafage, Frank Schwab, John Smith, David Skaggs, Ron El-Hawary, CSSG & GSSG



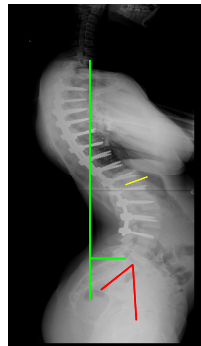
Sagittal Balance in Adults, AIS and EOS

$$LL = PI \pm 9$$



PI-LL can be altered when a fusion is carried distal or equal to L3

< -10 PI-LL increases PJK



20-28 % risk of PJK with distraction
Rib vs Spine no difference in PJK

Pre-op **hyperkyphosis** increased the risk for **post-op PJK**

PI-LL > 20° and PT > 30° increased risk for clinical PJK

El-Hawary et al. What is the Risk of Developing Proximal Junctional Kyphosis During Growth Friendly Treatments for Early-onset Scoliosis? JPO 2015

#1 most important parameter in ASD SRS, ODI, SF12
Schwab et al. 2010

Burton DA; Karkenny A; Schulz J; Hanstein R; **Gomez JA**; How are we Affecting Spinopelvic Parameters in Patients with Adolescent Idiopathic Scoliosis. JPO 2017

Gomez, El-Hawary, CSSG, GSSG et.al. The Effect of Spinopelvic Parameters on the Development of Proximal Junctional Kyphosis in Early Onset Scoliosis SRS 2016

Purpose

To determine if changes in spinopelvic alignment and/or PJK affect quality of life (QOL) parameters in EOS patients

Study Design

Retrospective cohort study of children treated with distraction based implants from two Early Onset Scoliosis registries



Methods

X-Ray measurements:

Spinopelvic parameters: TK, LL, PI, PT, PI-LL

PJA & PJK (*Glattes et al, 2005*)

EOS-Q24 to assess HRQoL:

Domains; 1-100: Higher = better

PI minus LL



Pelvic Tilt



Analysis

QOL-scores compared using t-test and Wilcoxon rank sum test

Sag parameters and QOL were analyzed using Spearman correlation; chi square testing



Demographics

N: 83 EOS pts

Age @ Surgery: 5.3 years \pm 3.1

Radiographic F/u: 4.4 years \pm 2.5

EOS-Q F/u: 6.6 years \pm 2.8

Anchors: 62 Rib and 21 Spine-Based Distraction

Etiology: 34 congenital, 25 idiopathic, 18 syndromic, 5 neuromuscular, 1N/A

	Pre-op Mean \pm SD	Most recent FU Mean \pm SD	<i>P-value</i>
Major Curve	70.8° \pm 18.1	58.2° \pm 18.1	<0.005
Thoracic Kyphosis	38.2° \pm 23.4	44.8° \pm 24.0	<0.005
Lumbar Lordosis	52.0° \pm 16.1	54.2° \pm 15.9	0.231
PI-LL	-3.4° \pm 17.8	-3.3° \pm 18.0	0.737

Etiology & HRQoL

	congenital	idiopathic	syndromic	neuromuscular	<i>P-value</i>
Patient QoL	84.4 ± 10.6	82.5 ± 12.0	78.8 ± 15.8	70.4 ± 12.4	0.087
Transfer	88.5 ± 16.6	92.0 ± 14.1	77.8 ± 26.5	68.0 ± 17.9	0.014
Physical Function	89.9 ± 14.3	89.6 ± 13.0	83.6 ± 21.5	64.2 ± 26.0	0.012
Daily Living	87.9 ± 15.6	87.1 ± 16.8	76.7 ± 27.9	66.0 ± 19.5	0.041
Fatigue	83.9 ± 15.8	83.2 ± 16.3	70.6 ± 18.9	79.8 ± 17.9	0.019

Syndromic and neuromuscular EOS have worse HRQoL scores than congenital and idiopathic

Pre-operative Thoracic Kyphosis & HRQoL

Pre TK correlated negatively with 8 HRQoL domains: Pre TK >50° lowered HRQoL scores:

HRQoL Domain	Spearman correlation coefficient (<i>P</i> -value)
Patient QoL	-.258 (<0.05)
Family Burden	-.222* (<0.05)
Transfer	-.280* (<0.05)
Physical Function	-.315** (<0.01)
Daily Living	-.285* (<0.05)
Fatigue	-.221* (<0.05)
Parental Impact	-.262* (<0.05)
Satisfaction	-.392** (<0.01)

HRQoL Domain	Pre TK ≤50°	Pre TK >50°	<i>P</i> -value
Satisfaction	81 ± 16	71 ± 16	0.014
Individual Questions	Pre-op TK ≤50°	Pre-op TK >50°	<i>P</i> -value
Sitting Difficulty	4.6 ± 0.9	4.3 ± 1.0	0.044
Dressing Difficulty	4.6 ± 0.9	4.2 ± 1.1	0.016

Relationship between Pre TK >50° and low HRQoL scores:

Spinopelvic Parameter	QOL Category	Risk Ratio	95% CI	<i>P</i> -value
Pre TK >50°	Satisfaction <80	1.983	0.920-4.278	0.043
Pre TK >50°	Physical Function <80	2.011	0.941-4.297	0.030
Pre TK >50°	Transfer <80	2.75	1.354-5.585	0.004

Post-operative TK, PJK & HRQoL

No difference in HRQoL scores between patients with low vs high TK at last f/u

HRQoL Domain	Post-op TK $\leq 50^\circ$	Post-op TK $> 50^\circ$	<i>P-value</i>
General Health	79.5 \pm 13.4	82.4 \pm 15.4	0.281

Similarly, radiographic PJK did not affect HRQoL scores

HRQoL Domain	Rx PJK (35%)	No PJK	<i>P-value</i>
Patient QOL	83.3 \pm 10.3	79.2 \pm 13.9	0.194

Clinical PJK (extension of UIV) affected Pain scores

HRQoL Domain	PJK (14%)	No PJK	<i>P-value</i>
Pain/Discomfort	65.0 \pm 12.4	75.4 \pm 18.5	0.036
Pain Frequency	2.9 \pm 0.8	3.7 \pm 1.0	0.010
Pain Severity	3.6 \pm 0.7	3.8 \pm 0.9	0.380
Relationship PJK & Pain	Risk Ratio	95% CI	p-value
Clinical PJK yes/no Pain < 80 vs ≥ 80	12.49	1.692-92.15	< 0.005

Pelvic Parameters & HRQoL

No consistent effect of Pelvic tilt (PT) and Lumbar Lordosis (LL) on HRQoL domains at most recent F/U

Continuous QOL score

Categorical chosen values

Pelvic Tilt	HRQoL Domain	Spearman correlation coefficient (<i>P</i> -value)	PT >30° vs ≤ 30°
Pre Pelvic tilt	Pain/Discomfort	.254 (<0.05)	No difference
F/U Pelvic tilt	No significant correlation with HRQoL domains		No difference
Lumbar Lordosis	HRQoL Domain	Spearman correlation coefficient (<i>P</i> -value)	LL <60° vs ≥ 60°
Pre LL	No significant correlation with HRQoL domains		Family Burden: 82 vs 76, <i>P</i> =0.04 Parent Impact: 83 vs 75, <i>P</i> =0.04
F/U LL	Fatigue	.219 (<0.05)	No difference

PREOP PI-LL & HRQoL

Pre-operative PI-LL affects Family Burden:

HRQoL Domain	Spearman correlation coefficient (<i>P</i> -value)
Family Burden	-.221 (<0.05)

HRQoL Domain	PI-LL $\leq \pm 10^\circ$	PI-LL $> \pm 10^\circ$	P-value
Family Burden	85 \pm 12	75 \pm 17	0.007
Fatigue	84 \pm 15	76 \pm 19	0.059
Parental Impact	85 \pm 12	77 \pm 18	0.070

POSTOP PI-LL

Similar HRQoL scores between patients with PI-LL $\leq \pm 10^\circ$ vs $> \pm 10^\circ$ were not sig different.

HRQoL Domain	PI-LL $\leq \pm 10^\circ$	PI-LL $> \pm 10^\circ$	<i>P</i> -value
Patient QOL	80.5 \pm 11.9	82.4 \pm 13.1	0.303

Risk associated with pelvic parameters to have low HRQoL

Spinopelvic Parameter	QOL Category	Risk Ratio	95% CI	p-value
PT $\geq 30^\circ$ post-op	Fatigue <80	5.032	1.082-23.41	0.028
LL $\geq 70^\circ$ pre-op	Physical Function <80	4.545	1.184-17.45	0.029
LL $\geq 70^\circ$ post-op	Pain <80	2.554	0.857-7.609	0.038
PI-LL $> \pm 10^\circ$ pre-op	Transfer <80	1.597	1.09-2.339	0.04
	Finance <80	2.015	1.355-2.996	0.001
	<i>Physical Function <80</i>	1.461	0.986-2.165	0.08
	<i>Fatigue <80</i>	1.459	0.976-2.179	0.074
	<i>Parental Impact <80</i>	1.474	0.990-2.195	0.067

Conclusions

- Syndromic and neuromuscular EOS patients have lower HRQoL scores
- Pre-operative TK has the greatest effect on HRQoL
Clinical PJK and Preop TK > 50° lead to lower HRQoL at F/U
- Pre-operative PI-LL outside 10 degrees weakly affects HRQoL
- Other pelvic parameters didn't show consistent effects on HRQoL at most recent FU

Thank You

