

Randal R. Betz, M.D.

Key Note Speaker
ICEOS 2012



Randy Betz

- Born in 1952 Philadelphia

Undergraduate: Pennsylvania State
Medical School: Temple University



Post Graduate Education

- Residency: Temple University
- Fellowship: Alfred I. duPont Institute
- ABC and North American Travelling fellowships
- Chief of Staff at Shriners Hospitals for Children, Philadelphia 2000-2012
- Professor of Orthopaedic Surgery, Temple University 1997-present

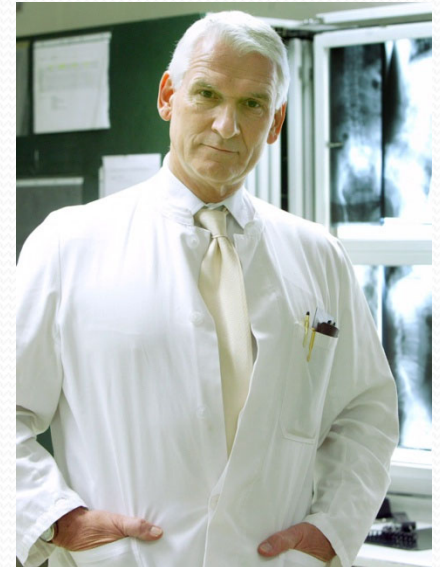


Sample of Other Acheivements

- Received many grants and awards
- Has many patents
- Member and officer in many professional organizations
- Written many books and chapters
- Many presentations
- Over 270 peer reviewed publications
- Others

Historical Summary: Harms Study Group

- The Harms Study Group was established in 1994 by Randy Betz, MD & Prof. Jurgen Harms, MD
- Started with 6 surgeons sharing data.
- Now, 15 core surgeon members & 17 associate members.





SCOLIOSIS RESEARCH SOCIETY

Dedicated to the Education, Research and Treatment of Spinal Deformity

- Instrumental in development of the
IMAST meeting



SRS Past Presidents



TEAM PLAYER

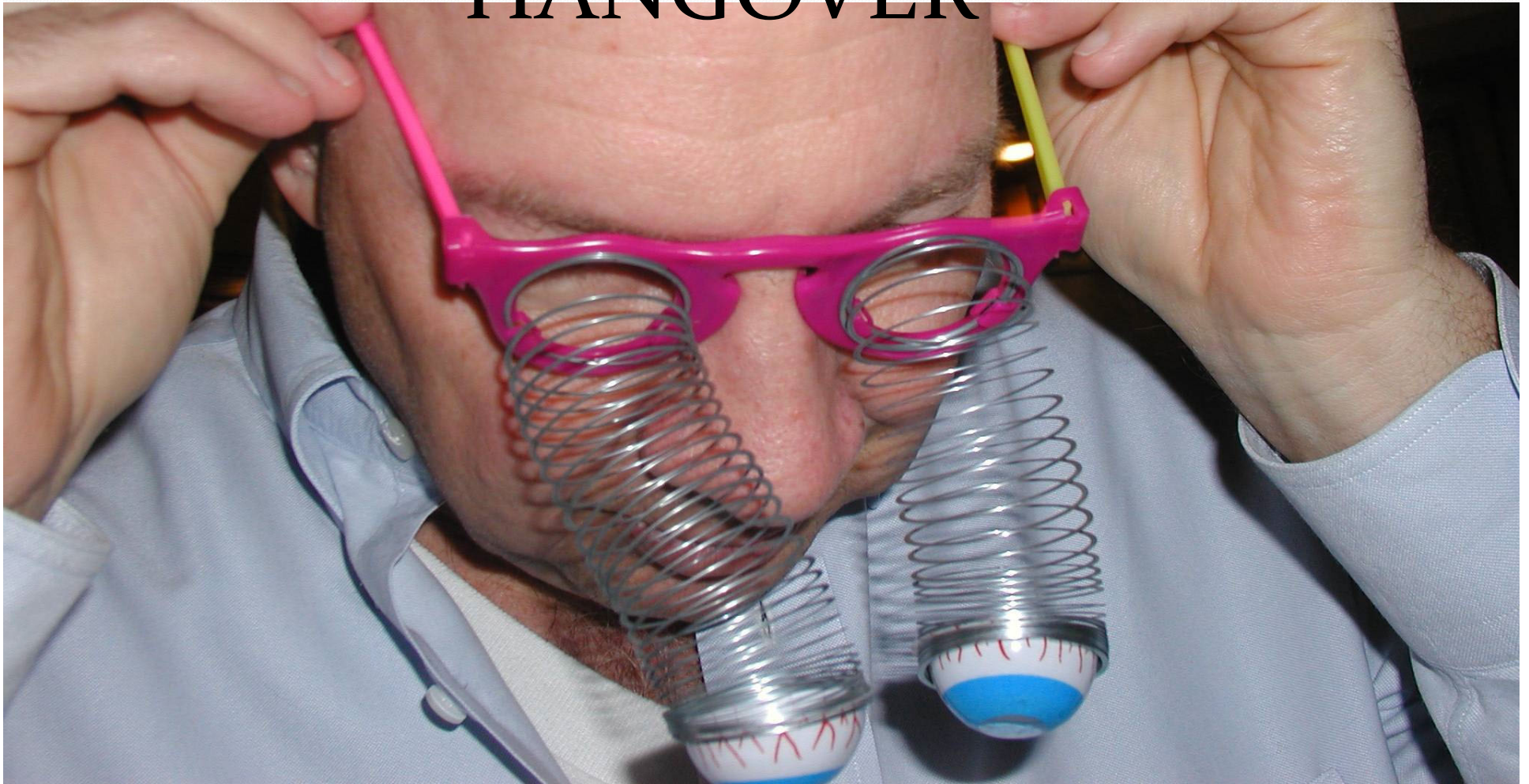


DEDICATED ACADEMICIAN

MANY SLEEPLESS NIGHTS
ON CONFERENCE CALLS



“CONFERENCE CALL HANGOVER”





WITHOUT
ALCOHOL



GREAT SMILE



IN TOUCH WITH HIS FEMININE
SIDE!!!

FAMILY MAN



PUTTING HIM ALL TOGETHER

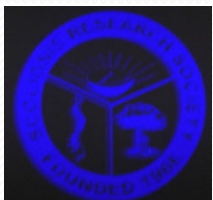


RANDY BETZ



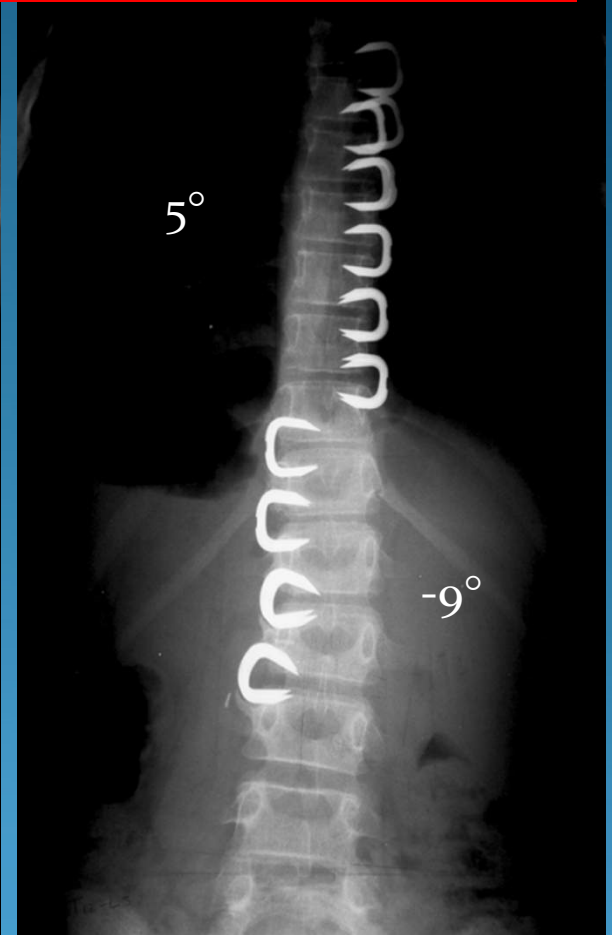
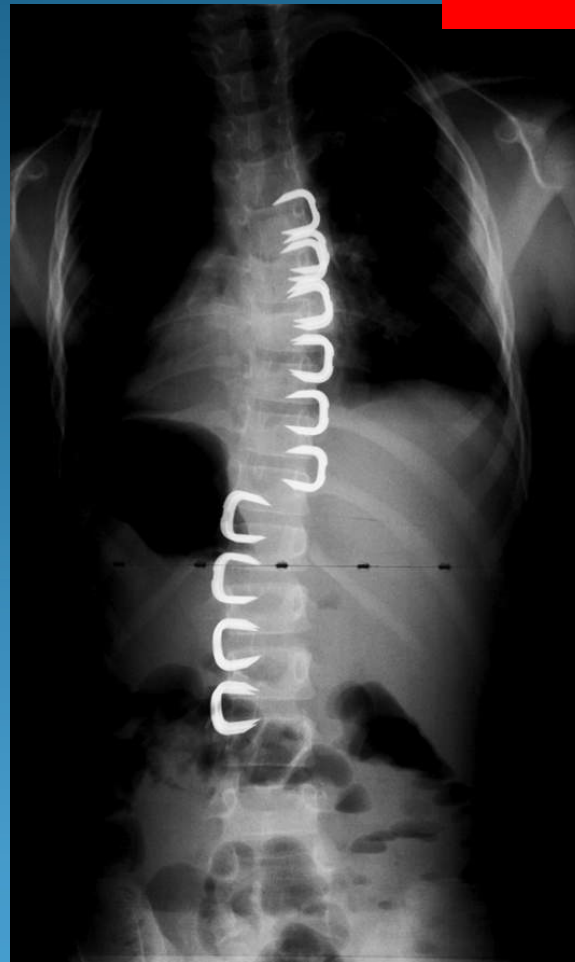
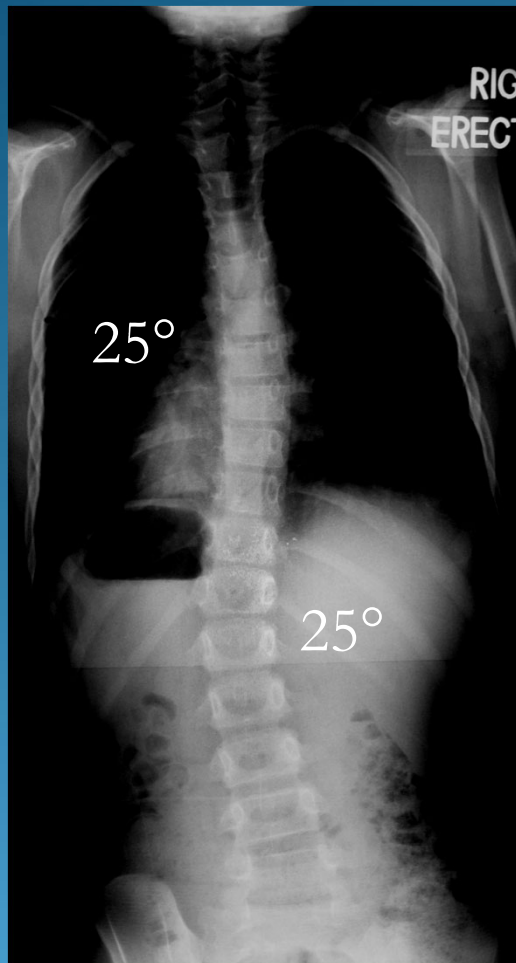
SCOLIOSIS RESEARCH SOCIETY

Dedicated to the Education, Research and Treatment of Spinal Deformity



8 yo female 3 year f/u

Best for curves $<25^{\circ}$
With growth remaining



Randy Betz

Nov. 2002

March 2005

Good Friend!



Randal R. Betz, M.D.



New and Forgotten Growth Modulation
Strategies for the Growing Child With
Spine Deformity